

PVC Free



VERVE

éncore
BY THE SYMPHONY COLLECTION



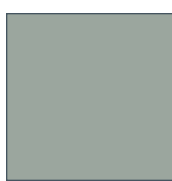
Sisal
EVE-032



Avalanche
EVE-003



Limestone
EVE-019



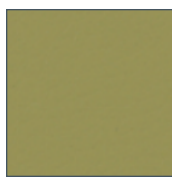
Seagull
EVE-031



Gravel
EVE-014



Angora
EVE-002



Harvest
EVE-016



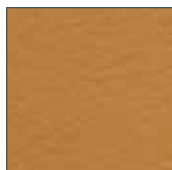
Ecu
EVE-012



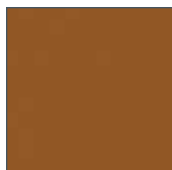
Straw
EVE-035



Daffodil
EVE-011



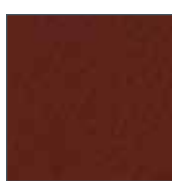
Turmeric
EVE-039



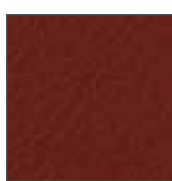
Papaya
EVE-025



Mustang
EVE-021



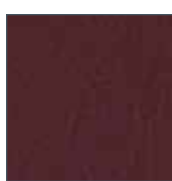
Hibiscus
EVE-017



Cranberry
EVE-009



Baked Clay
EVE-004



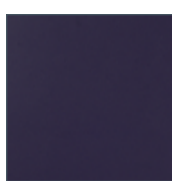
Currant
EVE-010



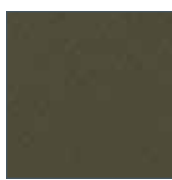
Red Brick
EVE-027



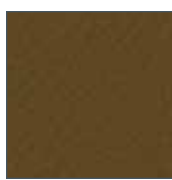
Redwood
EVE-028



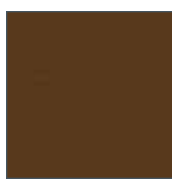
Verbena
EVE-040



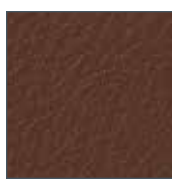
Mink
EVE-020



Caramel
EVE-007



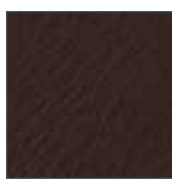
Toffee
EVE-038



Nutmeg
EVE-024



Allspice
EVE-001



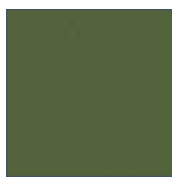
Sable
EVE-029



Sumatra
EVE-036



Guacamole
EVE-015



Wasabi
EVE-041



Surf
EVE-037



Basil
EVE-006



Cove
EVE-008



Kirby
EVE-018



Evergreen
EVE-013



Slate
EVE-033



Mystic
EVE-022



Sapphire
EVE-030



Baltic
EVE-005



Newport
EVE-023



Storm
EVE-034



Raven
EVE-026

VERVE

APPLICATIONS Contract, Hospitality, Education, Healthcare, Cruise Ships

GENERAL SPECIFICATIONS

Width 54"
Roll Size 30 Yards
Surface Composition: 100% Polyurethane
Backing Composition: 100% Polyester

PERFORMANCE SPECIFICATIONS

Abrasion Resistance 500,000+ Double Rubs per
 ASTM D 4157-07 Wyzenbeek / CFFA-1A
Hydrolysis 5 Years
Ultra Violet Resistant 200 Hours ASTM G26-96 Method C / CFFA-2
Cold Crack -20° F Federal Standard No. 191A-Method 5874 / CFFA-6
Crocking Class 4.5 Wet & Dry AATCC-Method 8-2001
Sulfide Stain Resistant

FLAMMABILITY REQUIREMENTS*

California Fire Code Technical Bulletin No. 117, Section E
 NFPA 260
 BIFMA
 UFAC Class 1
 IMO A.652 (16) 8.2
 May Comply with California 133 when Tested with Suitable Components

CLEANING INSTRUCTIONS

Prompt cleaning is always recommended. Ordinary dirt and stains can be removed with mild soap and water. Tougher stains can be removed with a 20% Bleach solution or a 50% Isopropyl Alcohol solution. Rinse the cleaned area with water and wipe dry with a lint-free cloth immediately after cleaning. If water or a cleaning agent is left to sit on this material for a period of time, it may leave a white residue, which can be wiped off with a damp cloth. The material should be wiped multiple times until the residue is removed. **Do not let water sit on the material for an extended period of time, as this may leave a watermark.**

REDUCED ENVIRONMENTAL IMPACT

Verve is a Water Based Polyurethane that is free of solvents, antimonies, or other hazardous chemicals.
 PVC Free
 Solvent / DMF Free
 Formaldehyde Free
 Phthalate Free
 Heavy Metal Free
 Low VOC
 Energy Efficient Production
 Water Efficient Production

Stain Resistance per CFFA 141

Ketchup	Class 5
Mustard	Class 5
Mayonnaise	Class 5
Soy Sauce	Class 5
Butter	Class 5
Coffee	Class 5
Tea	Class 4.5
Cola	Class 5
Salad Dressing	Class 5
Blood	Class 4.5
Urine	Class 5
Iodine/Betandine	Class 5
Motor Oil	Class 5
Liquid Foundation	Class 5
Hairspray	Class 5
Mascara	Class 5
Lipstick	Class 4.5

Grading: Class 5-Excellent;
 Class 4-Good; Class 3-Fair;
 Class 2-Poor; Class 1-Very Poor

OCI

A Division of **OCI** **STWELL**
 14815 Radburn Ave.
 Santa Fe Springs, CA 90670

Phone (562) 802-0464
 Toll Free Fax (866) 624-9662
 Toll Free Phone (866) 624-4968

Email: sales@ocisitwell.com

GRADE 3

Please visit our Website
www.ocisitwell.com

* This term and any corresponding data refer to typical performance in the specific tests indicated and should not be construed to imply the behavior of this or any other material under actual fire conditions. 915